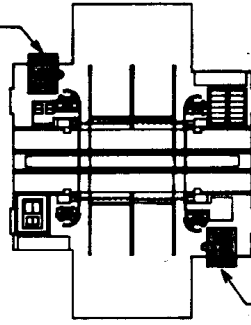


## BEFORE SETTING UP

Remove the tape.



Remove the tape.

## ABOUT POWER SUPPLY

### ATTENTION!

THIS PRODUCT REQUIRES A POWER SUPPLY WITH A NEGATIVE (-) GROUND. **DO NOT USE** ANY POWER SUPPLY WITH A POSITIVE (+) GROUND, AS THIS WILL CAUSE SEVERE DAMAGE.

MRC MODEL 2500 POWER PACK (PRE-1994 MODEL) HAS A POSITIVE (+) GROUND. TO DETERMINE COMPATIBILITY REFER TO NOTATION BELOW:

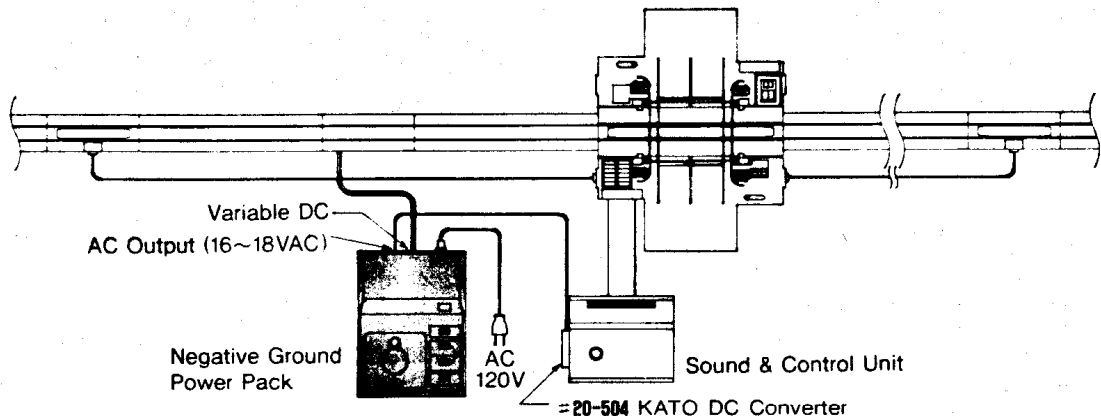
**NO:** AC VOLTAGE OUTPUT RATING OF 16.5 VAC. (PRE-1994 MODEL)  
**YES:** AC VOLTAGE OUTPUT RATING OF 18 VAC. (1994 OR LATER MODEL)

#### List of Compatible Power Packs. (As of 6/30/94)

- MRC [Except Model 2500 (Pre-1994 Production)]
- Bachmann (Spectrum Series)
- Model Power (Model ≠1250)

For Compatibility of Other Makes, Please Contact The Manufacturer of The Power Pack.

NOTE: Digital Systems are NOT Compatible.



## AUTOMATIC RESET CAUTION

When the system is first started or when an operation error occurs the automatic reset function may be triggered, therefore, the gate may not function properly after the first train clears. However, the system will resume normal operation with the second train.